

QuickShip

 *Shipping in 48 hours*



February 2024

Why Choose Williams

Founded in 1921, H.E. Williams, Inc. is a third-generation, family-owned and -operated lighting manufacturer. With over a century in business, we produce and ship products from our factory in Carthage, Missouri. Exceptional quality and customer service makes us the most trusted brand in lighting. Working with Williams is simply easier and friendlier.

Benefits

- Competitively-priced LED products
- Easy to install and service
- Ideal for design-build projects
- On-hand inventory to support immediate job requirements
- Williams quality you know and trust

Program Guidelines

- Submit order for QuickShip (QS) items only
- Reference QuickShip in the subject line of all requests
- Consult factory for individual product quantities over 100 pieces



Recessed



BP Backlit Flat Panel



FieldSELECT™ LUMENS + CCT ■ ■ ■ ■ ■ ■ ■ ■ ■ *Fixture Standards: Selectable CCT 3,500K/4,000K/5,000K, 80 CRI, 0-10V dimming, universal voltage, ships in 4-pack cartons*

BP-14-LS/8CS-QS-DIM-UNV	1' x 4'	Selectable lumens 3,100/3,600/4,700
BP-14-LS/8CS-EM/8W-QS-DIM-UNV	1' x 4'	Selectable lumens 3,100/3,600/4,700 ■ 8-watt EM battery
BP-22-LS/8CS-QS-DIM-UNV	2' x 2'	Selectable lumens 3,100/3,500/4,200
BP-22-LS/8CS-EM/8W-QS-DIM-UNV	2' x 2'	Selectable lumens 3,100/3,500/4,200 ■ 8-watt EM battery
BP-24-LS/8CS-QS-DIM-UNV	2' x 4'	Selectable lumens 3,500/4,700/5,700
BP-24-LS/8CS-EM/8W-QS-DIM-UNV	2' x 4'	Selectable lumens 3,500/4,700/5,700 ■ 8-watt EM battery Extended lead times apply.

LT Troffer



Fixture Standards: 80 CRI, frosted acrylic lens, 0-10V dimming, universal voltage

LT-14-L47/835-AF-QS-DIM-UNV	1' x 4'	4,700 lumens ■ 3500K CCT
LT-14-L47/840-AF-QS-DIM-UNV	1' x 4'	4,700 lumens ■ 4000K CCT
LT-22-L39/835-AF-QS-DIM-UNV	2' x 2'	3,900 lumens ■ 3500K CCT
LT-22-L39/840-AF-QS-DIM-UNV	2' x 2'	3,900 lumens ■ 4000K CCT
LT-24-L40/835-AF-QS-DIM-UNV	2' x 4'	4,000 lumens ■ 3500K CCT
LT-24-L40/840-AF-QS-DIM-UNV	2' x 4'	4,000 lumens ■ 4000K CCT
LT-24-L64/835-AF-QS-DIM-UNV	2' x 4'	6,400 lumens ■ 3500K CCT
LT-24-L64/840-AF-QS-DIM-UNV	2' x 4'	6,400 lumens ■ 4000K CCT

PT Shallow Plenum Troffer

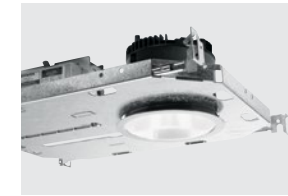


Fixture Standards: Diffuse ribbed acrylic round lens, 0-10V dimming, universal voltage

PT-22-L43/835-RA-QS-DIM-UNV	2' x 2'	4,300 lumens ■ 3500K CCT
PT-22-L43/840-RA-QS-DIM-UNV	2' x 2'	4,300 lumens ■ 4000K CCT
PT-24-L49/835-RA-QS-DIM-UNV	2' x 4'	4,900 lumens ■ 3500K CCT
PT-24-L49/840-RA-QS-DIM-UNV	2' x 4'	4,900 lumens ■ 4000K CCT

Downlights

4DR 4.5" Round



Fixture Standards: 80 CRI, 3500K CCT, 1% dimming, open reflector, wide distribution, 1/2" standard flange, new construction pan with hardware

4DR-TL-L10/835-QS-DIM1-UNV-OW-OF-__-N-F1	1,000 lumens	■ Specify reflector color: WH, BL, or CS
4DR-TL-L20/835-QS-DIM1-UNV-OW-OF-__-N-F1	2,000 lumens	■ Specify reflector color: WH, BL, or CS

4RCD 4" Round Commercial



FieldSELECT™ LUMENS + CCT ■ ■ ■ ■ ■ ■ ■ ■ ■ *Fixture Standards: Selectable CCT 2,700K/3,000K/3,500K/4,000K/5,000K, 0-10V dimming, universal voltage*

4RCD-LS/9CS-WH-QS-DIM-UNV	Selectable lumens 500/800/1,000	■ 90 CRI ■ White trim
4RCD-LS/9CS-SS-QS-DIM-UNV	Selectable lumens 500/800/1,000	■ 90 CRI ■ Semi-specular trim
4RCD-N-F1-QS	New construction pan with hardware	

6DR 6" Round



Fixture Standards: 80 CRI, 3500K CCT, 1% dimming, open reflector, wide distribution, 1/2" standard flange, new construction pan with hardware

6DR-TL-L10/835-QS-DIM1-UNV-OW-OF-CS-N-F1	1,000 lumens	■ Clear semi-specular reflector
6DR-TL-L20/835-QS-DIM1-UNV-OW-OF-CS-N-F1	2,000 lumens	■ Clear semi-specular reflector

6RCD 6" Round Commercial

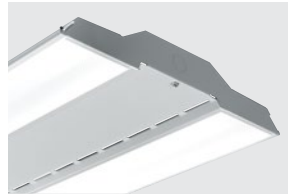


FieldSELECT™ LUMENS + CCT ■ ■ ■ ■ ■ ■ ■ ■ ■ *Fixture Standards: Selectable CCT 2,700K/3,000K/3,500K/4,000K/5,000K, 0-10V dimming, universal voltage*

6RCD-LS/9CS-WH-QS-DIM-UNV	Selectable lumens 1,200/1,700/2,200	■ 90 CRI ■ White trim
6RCD-LS/9CS-SS-QS-DIM-UNV	Selectable lumens 1,200/1,700/2,200	■ 90 CRI ■ Semi-specular trim
6RCD-N-F1-QS	New construction pan with hardware	

Industrial & Wraps

GS Slim High Bay



Fixture Standards: 80 CRI, clear acrylic lens, 0-10V dimming, universal voltage

GS-2-L240/840-CA-QS-DIM-UNV 2' ■ 24,000 lumens ■ 4000K CCT

GS-2-L240/850-CA-QS-DIM-UNV 2' ■ 24,000 lumens ■ 5000K CCT

GS-4-L360/840-CA-QS-DIM-UNV 4' ■ 36,000 lumens ■ 4000K CCT

GS-4-L360/850-CA-QS-DIM-UNV 4' ■ 36,000 lumens ■ 5000K CCT



75S | 75R Narrow Lens Strip



Fixture Standards: 80 CRI, diffuse acrylic lens, 0-10V dimming, universal voltage

75R-4-L50/835-QS-DIM-UNV 4' ■ 5,000 lumens ■ 3500K CCT ■ Round lens

75R-4-L50/840-QS-DIM-UNV 4' ■ 5,000 lumens ■ 4000K CCT ■ Round lens

75R-8-L100/835-QS-DIM-UNV 8' ■ 10,000 lumens ■ 3500K CCT ■ Round lens

75R-8-L100/840-QS-DIM-UNV 8' ■ 10,000 lumens ■ 4000K CCT ■ Round lens

75S-4-L50/835-QS-DIM-UNV 4' ■ 5,000 lumens ■ 3500K CCT ■ Square lens

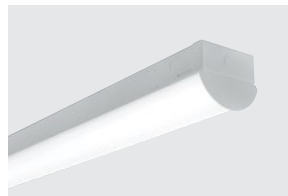
75S-4-L50/840-QS-DIM-UNV 4' ■ 5,000 lumens ■ 4000K CCT ■ Square lens

75S-8-L100/835-QS-DIM-UNV 8' ■ 10,000 lumens ■ 3500K CCT ■ Square lens

75S-8-L100/840-QS-DIM-UNV 8' ■ 10,000 lumens ■ 4000K CCT ■ Square lens



NW Narrow Wrap



Fixture Standards: 4', 80 CRI, ribbed diffuse acrylic lens, 0-10V dimming, universal voltage

NW-4-L54/840-RA-QS-DIM-UNV 5,400 lumens ■ 4000K CCT

NW-4-L54/850-RA-QS-DIM-UNV 5,400 lumens ■ 5000K CCT

NW-4-L74/840-RA-QS-DIM-UNV 7,400 lumens ■ 4000K CCT

NW-4-L74/850-RA-QS-DIM-UNV 7,400 lumens ■ 5000K CCT

17 Low-Profile Wrap



Fixture Standards: 80 CRI, 3500K CCT, frosted prismatic acrylic diffuser, 0-10V dimming, universal voltage

17-4-L55/835-AF-QS-DIM-UNV 4' ■ 5,500 lumens



Egress & Site Lighting



EXIT Exit Sign



Fixture Standards: Red letters, AC operation with emergency battery backup, industry-standard white housing, 120 & 277 dual voltage

EXIT-R-EM-WHT-QS-D

EMER/LED Emergency Light



Fixture Standards: Wall or ceiling mount, AC operation with emergency battery backup, industry-standard white housing, 120 & 277 dual voltage

EMER/LED-WHT-QS-D

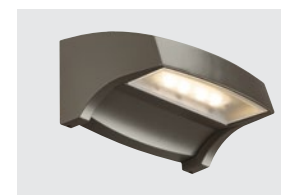
EMER/DECO Decorative Light



Fixture Standards: AC operation with emergency battery backup, die-cast aluminum housing, dark bronze finish, 120 & 277 dual voltage

EMER/DECO-DBR-QS-D

VWMH Horizontal Architectural Mini



Fixture Standards: 80 CRI, 4000K CCT, lambertian distribution, clear glass lens, dark bronze housing 0-10V dimming, Universal voltage

VWMH-L10/840-TL-DBZ-CGL-QS-DIM-UNV 1,000 lumens

VWMH-L17/840-TL-DBZ-CGL-QS-DIM-UNV 1,700 lumens



H.E. WILLIAMS, INC.

831 West Fairview Ave | Carthage, MO 64836

417-358-4065

hew.com

REV.02/26/24.JL